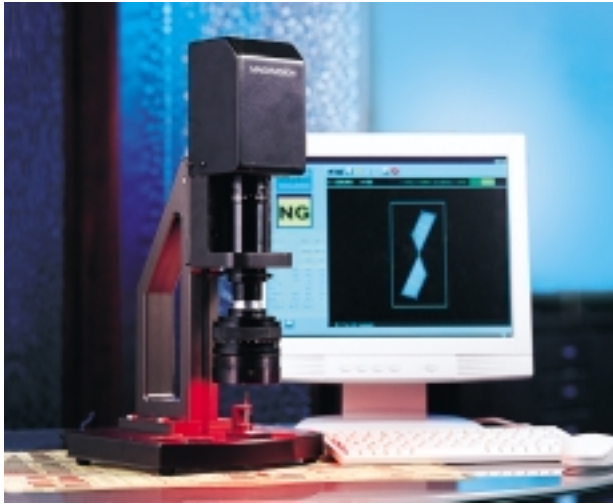


PointGauge™ Drill bit inspection for cutting lips



Key benefits

- A quick and precise solution for drill bit IQC
- Saves on both training time and the cost of bit inspection
- Measures with more accuracy than a trained inspector
- Compact size saves on energy and maintenance
- Provides detailed information for monitoring the quality of suppliers



Overview

Traditionally, well-trained inspectors need the aid of microscopes to inspect for drill bit defects. Even with a microscope, there is no data output during inspection for objective analysis. Naturally, different inspectors have different results when measuring the same object. There is no evidence to judge the quality of the bit itself.

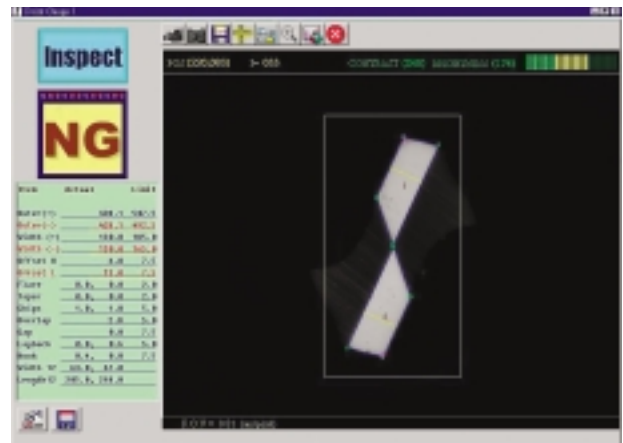
The PointGauge™ system supplies all evidence required for in-depth quality inspection.

Advantages

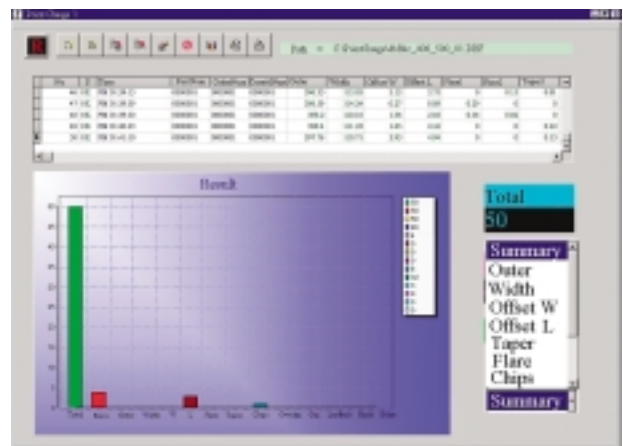
The PointGauge™ system contains a high resolution CCD and lens, which can capture bit images with diameters from 0.1 mm to 0.7 mm.

The resolution can increase images to 0.5 by using the largest optical zoom. The PointGauge™ system can measure eight major defects, including offsets, gaps, overlaps, hooking, lay-backs, chips, tapers, and flares.

The measuring time of a single bit is less than 0.65 second. Inspection parameters can be easily defined and saved. The PointGauge™ system can measure results by a common DBF format. Users can then simply import these results to Microsoft Excel™ to analyze the data they need.



The PointGauge™ system measures the drill bit and displays the measuring in the result window. The data in red indicates the NG result.



The PointGauge™ system reports the inspection results of 50 drill bits. The system can analyze the results by different defect types.

Structure	Granite gantry
Dimensions	220 x 262 x 396 mm (L x W x H)
Weight (controller excluded)	10 kg
CCD	High resolution array CCD
Lighting	Adjustable LED ring light
Loading & unloading	Manually
Inspection bit range	Type 1: 0.2 - 2.0 mm Type 2: 0.1 - 0.7 mm
Inspection time	0.65 sec / bit
Controller	High performance PC
Operating system	Windows™ family
Power	AC 110V/220V, 60Hz, 500W

The information is believed to be true and accurate based on our laboratory testing and experience. Specifications and design are subject to change without notice.

MACHVISION, INC.

3F, No. 15, Industry East Road IX, Science-Based Industrial Park,
Hsinchu, 30077, Taiwan, R.O.C.

Tel: +886 35638599 Fax: +886 35638598

<http://www.machvision.com.tw>

e-mail: sales@machvision.com.tw